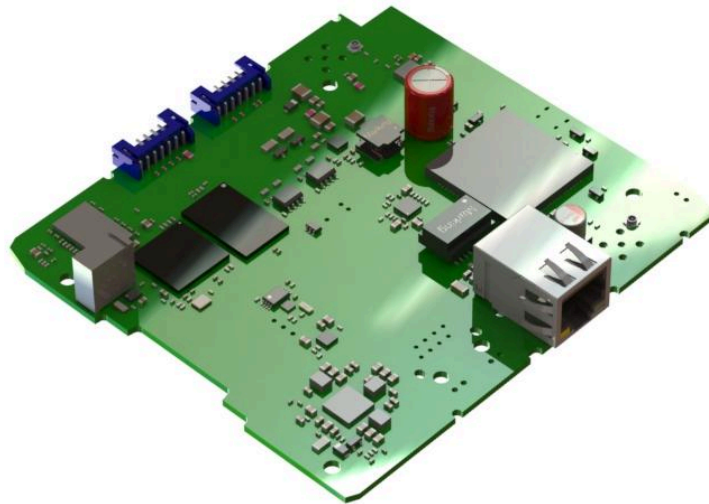


Technical Specifications

Volt Time | Communication Board



Dimensions	106.75 * 96.30 * 15mm
Supply Voltage	8-15V DC
Power Consumption	Nominal 1 Watt
Processor	High processing power, ARM applications processor with Flash storage and DDR memory
Communication	On board GPRS (2G) and CAT M1 (4G) modem (offboard antenna optional) 2x10/100Mbit RJ45 Ethernet connection Wi-Fi 2.4 GHz Bluetooth
Input/Output	I2C interface 2 x RS485 RFID interface USB 2 x 10/100Mbit RJ45 Ethernet connection LCD display expansion
kWh-meter interface	Through RS485 connection (MODBUS)
Workable temperature	-25°C to +70°C, 5% to 95%, non-condensing
Temperature Control	On-board temperature sensor on PCB
Updates	Remote firmware update over OCPP1.6J
Display	High resolution screens supported

Connectivity

Connector
RS485 - 1
RS485 - 2
12V DC power input
I2C
3.3V DC Output supply
SMA Wi-Fi/Bluetooth external antenna (optional)
UMMC (U.FL) Wi-Fi/Bluetooth external antenna (optional)
Wi-Fi onboard antenna (optional)
USB 2.0 micro USB powered port (5W)
SMA modem external antenna (optional)
Ethernet connectors
LCD expansion connector